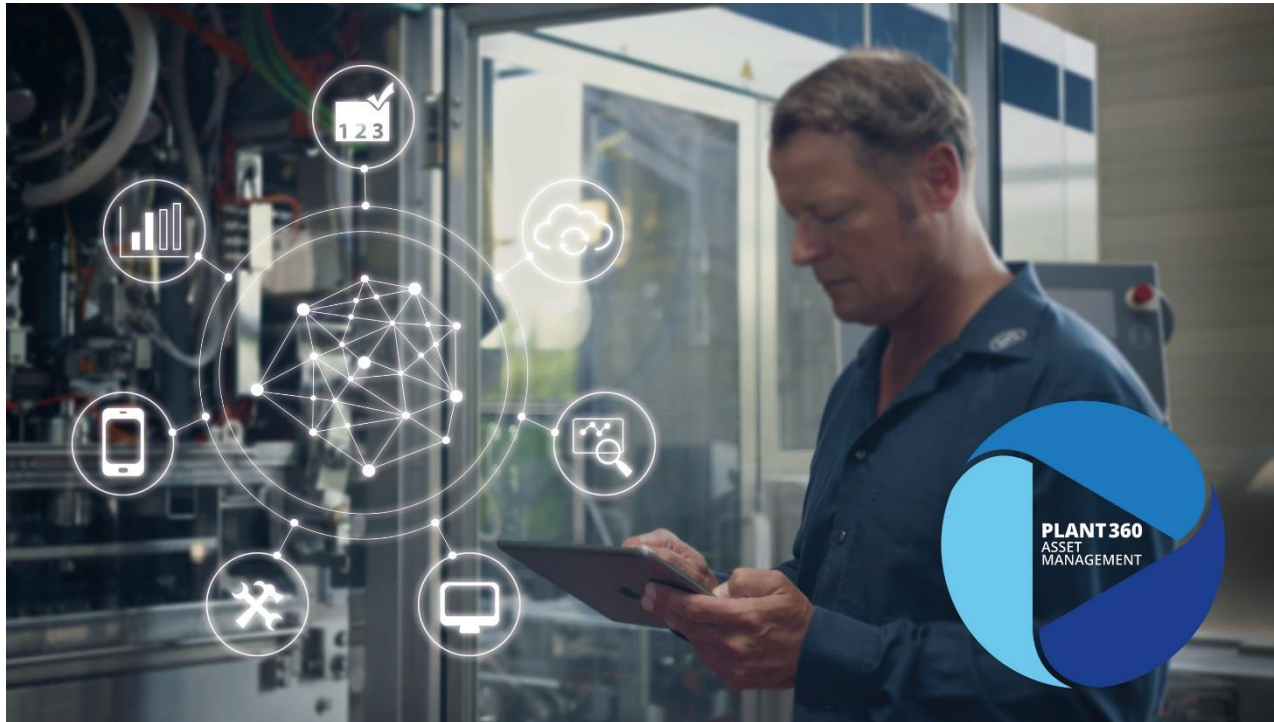


19.11.2019



SMART FACTORY SOLUTION

## **SIG launches first-ever integrated asset performance and field service management solution**

SIG is set to deliver the first integrated APM (asset performance management) and FSM (field service management) digital solution for the food and beverage industry. Developed in partnership with GE Digital, the Plant 360 Asset Management will feature a range of on-demand digital services designed to help manufacturers reach new levels of efficiency, productivity and connectivity in their operations.

SIG Plant 360 Asset Management is being co-developed with GE Digital in response to increasing demands in the food and beverage industry, particularly the need for higher productivity, quality and uptime. With this innovative and integrated solution comprised of GE

Digital's APM and ServiceMax's FSM software, SIG will offer state-of-the-art digital tools to help its customers boost production, reduce downtime and ensure even greater quality to meet ever-changing consumer needs.

*"Equipment manufacturers like SIG are increasingly leveraging Industrial Internet of Things solutions to differentiate themselves through superior after-sales service," said Dan Lohmeyer, SVP Digital Product Management at GE Digital. "GE Digital's Asset Performance Management and ServiceMax's Field Service Management software help OEMs ensure their installed base of equipment is performing optimally, and their field service resources are managed efficiently. Our integrated solution allows SIG to detect and correct potential equipment issues in advance, before they result in unplanned customer downtime, delighting end-customers through improved OEE and driving improved NPS scores for SIG."*

### **A modular solution for maintenance**

Plant 360 Asset Management is a modular solution designed to improve filling line reliability and availability while reducing costs. The Connector module enables the collection of digital data, which is loaded into the Predix Cloud – GE Digital's cloud platform. From here, the data can be retrieved and evaluated at any time by SIG's reliability engineering team. This module can also be used for SIG's other Smart Factory solution, Plant 360 Controller, which enables manufacturers to monitor, control and optimise every angle of their filling plant operations.

The Smart Maintenance module is based on a software-supported holistic process called Maintenance & Asset Data Analytics as well as an Asset Management Cockpit. This ensures customers have one data source for all maintenance-related activities. The third module is called Smart Performance and is based on Asset Health Monitoring and Predictive Asset Data Analytics, which will provide an optimal platform for predictive maintenance in the future.

### **Optimising assets at every stage**

Together, the three modules will enable higher asset reliability and availability. The solution ensures a direct link between condition-based and predictive maintenance alerts in APM and the work being scheduled for field-service engineers in FSM. This helps translate alerts into efficient action on the ground and ensures field service teams receive as much advance notice as possible of an issue, which they can address before it impacts a customer's operations. For example, defined wearing parts will no longer be replaced at fixed maintenance intervals. Instead, they will only be replaced when the data indicates a certain degree of wear.

*"With Plant 360 Asset Management, any changes to equipment strategies – for example, changing service intervals or maintenance steps – can be quickly reflected in new FSM work," said Klaus Andresen, Senior Vice President Global Technology at SIG. "This improves the efficiency and effectiveness of the overall SIG maintenance process. Data captured by field-service workers is immediately available for analysis by APM and the global SIG reliability engineering team, allowing us to better and more quickly detect emerging issues and trigger preventative steps."*

SIG Plant 360 Asset Management is being launched for the first time in the Middle East with

Almarai, one of Saudi Arabia's largest food and beverage producers, as start of the global rollout.

*Robert Ross, Dairy and Juice Manufacturing Manager CPP2  
Manufacturing Division at Almarai: "Digital Solutions are vital for us to  
analyse exactly what is happening in our plant and going forward to  
produce reliably. The aspirational partnership with SIG & GE will  
greatly help us in root cause analysis and in providing valid answers.  
This will ensure reliable production and to improve our OEE. We are  
very proud to be an early adopter of this cutting-edge solution."*

Plant 360 Asset Management is one of several value-added solutions within SIG's Smart Factory segment, which is designed to help manufacturers meet the challenge of increasing output and driving down costs in today's competitive environment. The solution-driven Smart Factory platform aims to deliver IoT-enabled systems and technical services that transform filling plants into connected factories that offer the highest efficiency, flexibility and quality.

**MORE INFORMATION:**

<https://www.sig.biz/en/service/digital-services/sig-plant-360-asset-management/>

**WATCH OUR VIDEO:**

<https://youtu.be/6SEtLuefNCY>

**LEARN MORE ABOUT SIG'S SMART FACTORY SOLUTIONS:**

<https://www.sig.biz/en/solutions/smart-factory>

**About SIG**

SIG is a leading systems and solutions provider for aseptic packaging. We work in partnership with our customers to bring food products to consumers around the world in a safe, sustainable and affordable way. Our unique technology and outstanding innovation capacity enable us to provide our customers with end-to-end solutions for differentiated products, smarter factories and connected packs, all to address the ever-changing needs of consumers.

Founded 1853, SIG is headquartered in Neuhausen, Switzerland. The skills and experience of our approximately 5,000 employees worldwide enable us to respond quickly and effectively to the needs of our customers in over 60 countries. In 2018, SIG produced more than 35 billion carton packs and generated €1.7 billion in revenue. For more information, visit [www.sig.biz](http://www.sig.biz).

**About GE Digital**

GE Digital is reimagining how industrials operate, optimize and analyze their assets, unlocking machine data to turn valuable insights into powerful business outcomes. GE Digital's industrial software portfolio – including grid optimization and analytics, asset and operations performance management, and manufacturing operations and automation – helps customers manage the entire asset lifecycle. Underpinned by Predix, the application development platform for the Industrial Internet, GE Digital enables industrial businesses to operate faster, smarter and more efficiently. For more information, visit [www.ge.com/digital](http://www.ge.com/digital).

**PICTURE CAPTION:****Plant 360 Asset Management:**

SIG is set to deliver the first integrated APM (asset performance management) and FSM (field service management) digital solution for the food and beverage industry. Developed in partnership with GE Digital, the Plant 360 Asset Management will feature a range of on-demand digital services designed to help manufacturers reach new levels of efficiency, productivity and connectivity in their operations.

**Photo: SIG**

**YOUR CONTACT:**

**Heike Thevis**  
*Press Officer*

**Tel.:** +49 (0)2462 79 2608  
**Email:** [heike.thevis@sig.biz](mailto:heike.thevis@sig.biz)

**SIG International Services GmbH**

Visit us on [www.sig.biz](http://www.sig.biz) or on our blog at [signals.sig.biz](http://signals.sig.biz)