



SIG Vita

Quickguide

for SIG Vita in Rotogravure Printing

Status April 2023

Supplement to Artwork Guideline for SIG Vita

This quickguide gives insights on the printing possibilities on SIG Vita package. This document is intended for quality departments in order to deal with some space restricted areas.

It takes into account the relevant aspects of the distribution chain (transportation, POS...).

The general SIG specifications for Rotogravure Printing can be found in the Artwork Guideline.

Designing

General overview of the printing areas of SIG Vita



3D viewing front

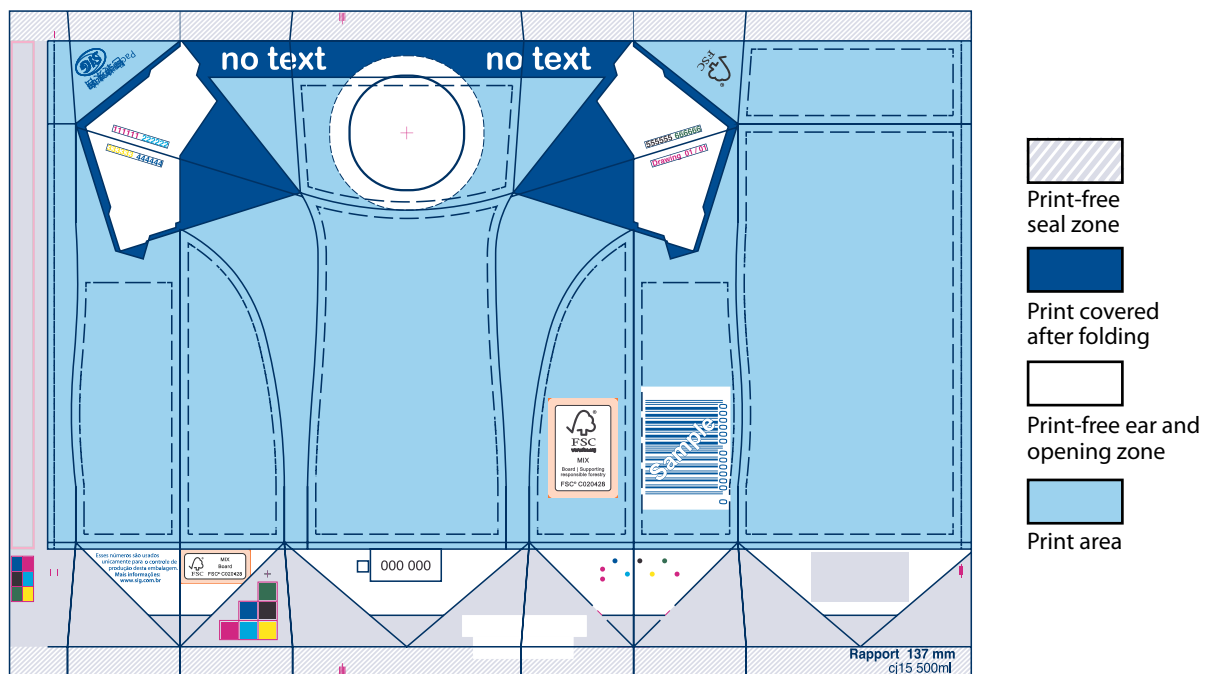


3D viewing rear



3D viewing top

The image shows the upper 3D package flattened, as it appears on your monitor, when designing. On the following pages, printing suggestions on typical SIG Vita printing areas will be explained.



The 2D Keyline/Cutterguide

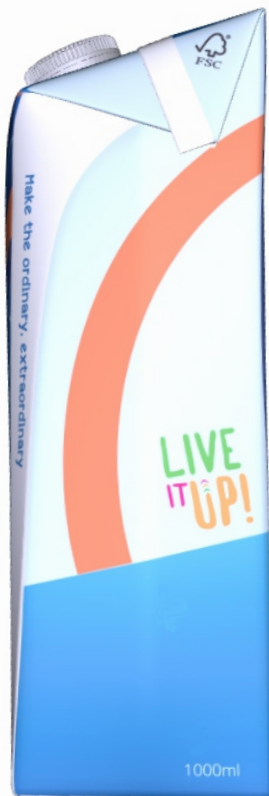
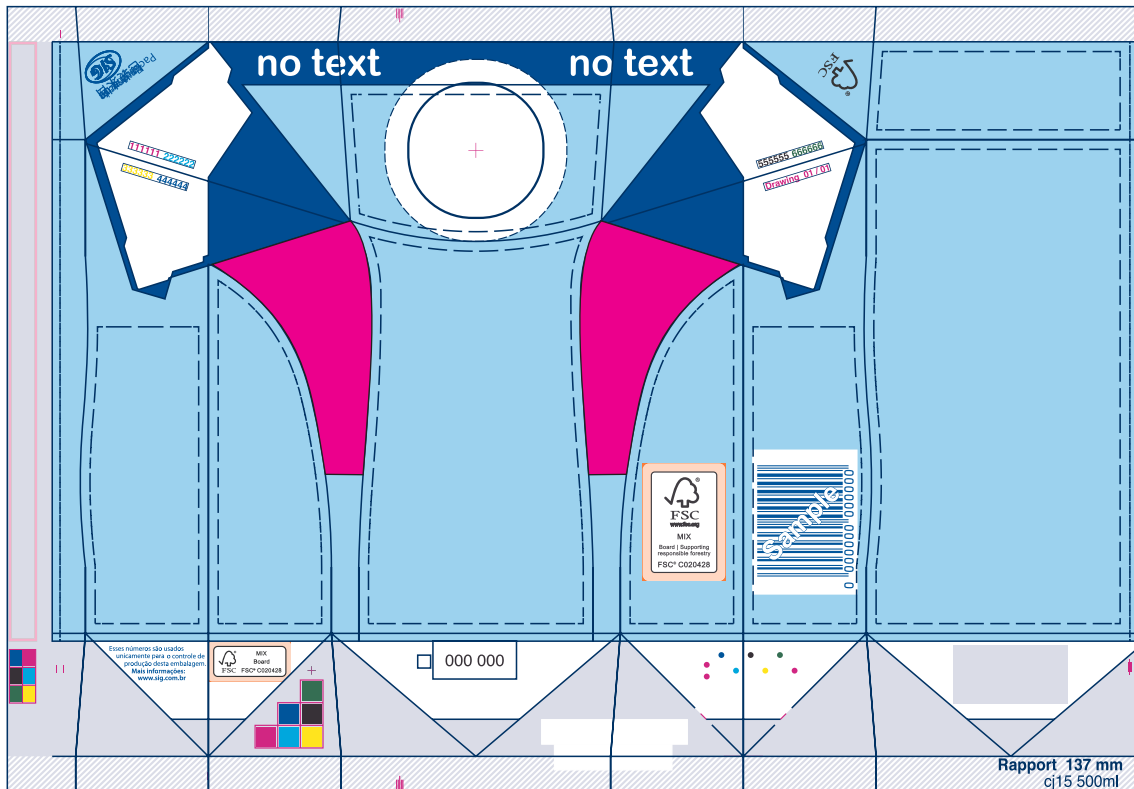
1 The best before date is recommended to be placed on the print-free sealing zone at the top.



The minimum barcode size is about 91% - SC 01, the code is to be placed as shown in the samples in the quickguide.

Generally the specifications of the Artwork Guideline for Rotogravure Printing are valid. The differing specifications in this Quickguide are only valid for SIG Vita.

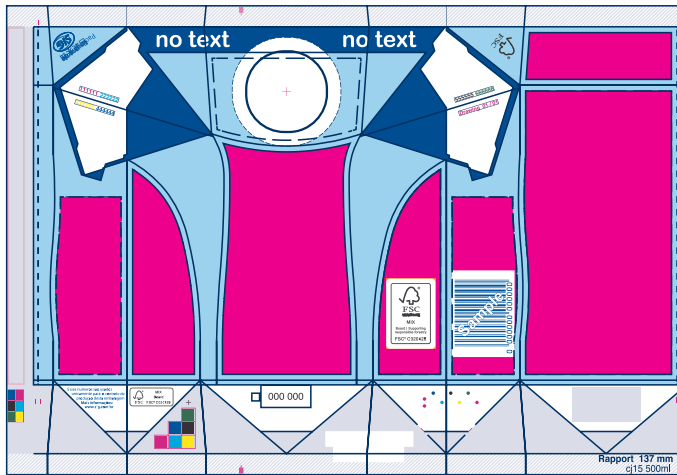
Designing Printing suggestion



The upper 2/3 of the rounded side panels merges into the side of the pack optically. Texts and graphic elements cannot be seen completely when the package is standing in a tray at the POS.

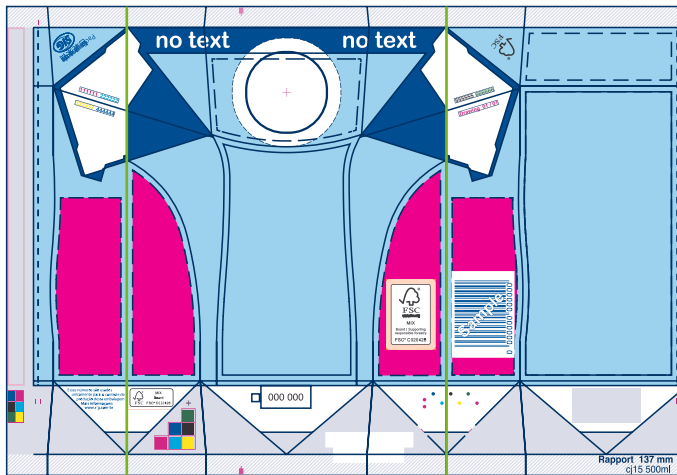
Generally the specifications of the Artwork Guideline for Rotogravure Printing are valid. The differing specifications in this Quickguide are only valid for SIG Vita.

Designing Printing suggestions



The text must be placed inside the type marking area (dashed lines) simulated by the pink areas. Please consider that the upper 2/3 of the rounded side panels merges into the side of the pack optically

type area



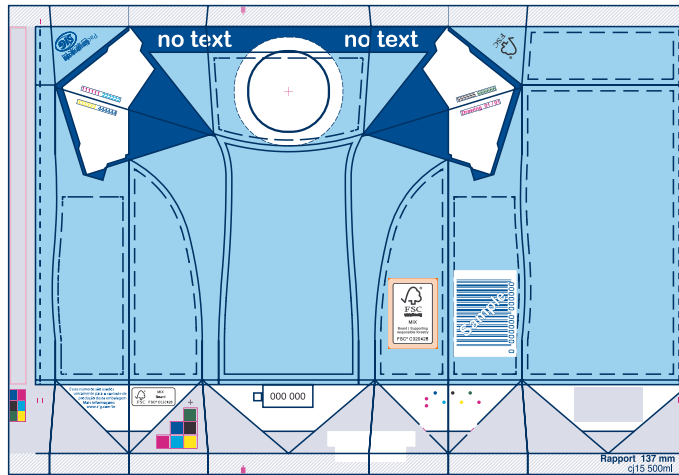
The type areas on both side panels are interrupted because of two creasing lines necessary for our sleeve production (simulated by green lines). Therefore text cannot be printed over this area. This is one of the main differences between SIG Bloc/SIG Fit it and SIG Vita dielines.

interrupted type area - side panels



If text is placed across the crease-line, the legibility will be affected by colour abrasion and scratches. Please see examples of the effect in the photos aside. Note that SIG will not accept any complaint on legibility of texts that is placed across the crease-line.

Generally the specifications of the Artwork Guideline for Rotogravure Printing are valid. The differing specifications in this Quickguide are only valid for SIG Vita.



SIG has got a general approval for the use of the FSC Mini Claim for all SIG Vita filling sizes placed in the bottom area. For the case the FSC Claim is placed on a visible sides of the package the common Full Claim variants need to be used.

Generally the specifications of the Artwork Guideline for Rotogravure Printing are valid. The differing specifications in this Quickguide are only valid for SIG Vita.