



# *SIG Style*

## Quickguide for SIG Style in Rotogravure Printing

---

Status April 2023

## Supplement to Artwork Guideline for SIG Style

This quickguide gives insights on the printing possibilities on SIG Style package. This document is intended for quality departments in order to deal with some space restricted areas.

It takes into account the relevant aspects of the distribution chain (transportation, POS...).

The general SIG specifications for Rotogravure Printing can be found in the Artwork Guideline.

## Designing

### General overview of the printing areas of SIG Style



3D viewing front

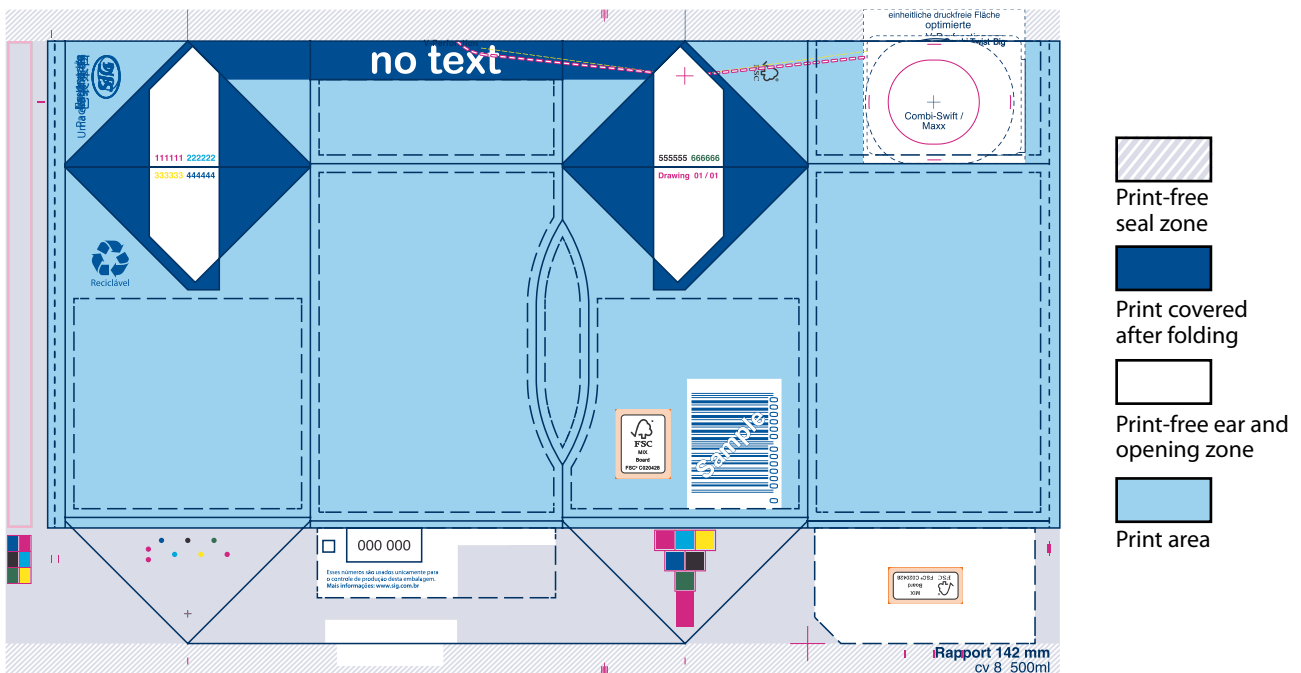


3D viewing rear



3D viewing top

The image shows the upper 3D package flattened, as it appears on your monitor, when designing.



#### The 2D Keyline/Cutterguide

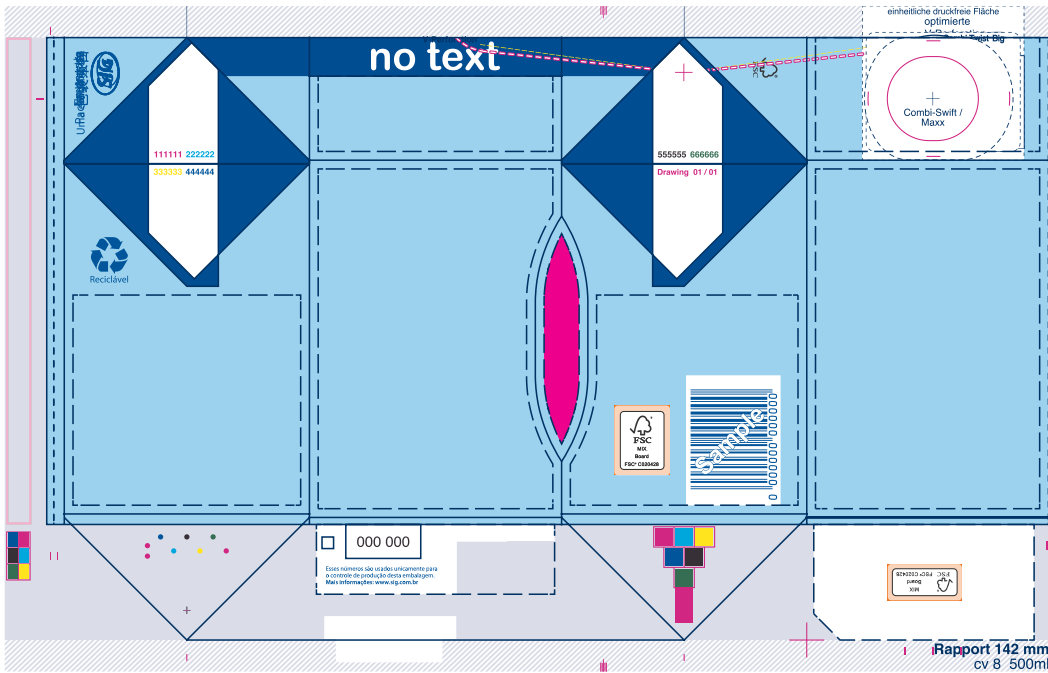
**1** The best before date is recommended to be placed on the print-free sealing zone at the top.



**The minimum barcode size is about 91% - SC 01, the code is to be placed as shown in the samples in the quickguide.**

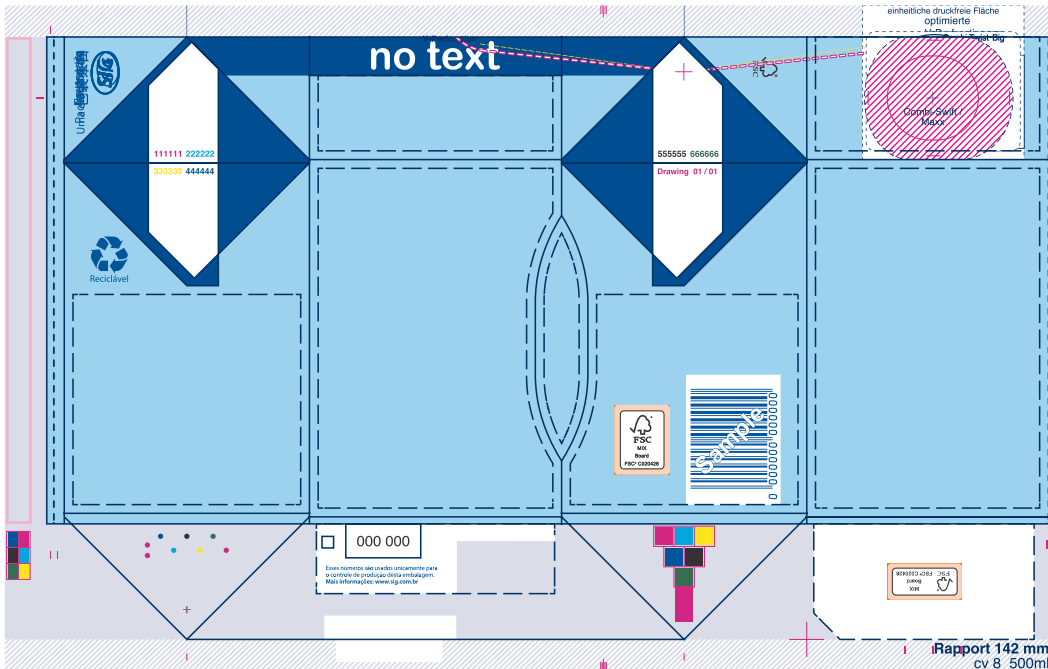
Generally the specifications of the Artwork Guideline for Rotogravure Printing are valid. The differing specifications in this Quickguide are only valid for SIG Style.

# Designing Printing suggestions



type area

It is possible to place text inside of the extra corners (simulated by the pink areas). The text has to fit inside of the type marking area (dashed lines).



opening option - screw cap

The spout is centered on the carton top panel. The area within the hatched line, where the screw cap is glued, is to be left unprinted.

Generally the specifications of the Artwork Guideline for Rotogravure Printing are valid. The differing specifications in this Quickguide are only valid for SIG Style.