



# SIG Dome

## Quickguide for *SIG Dome*

---

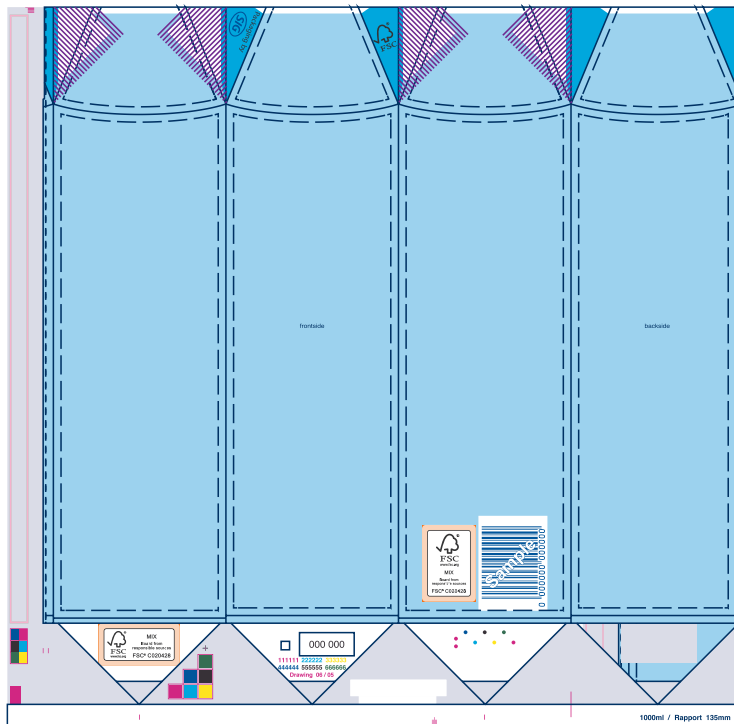
Status April 2023

# Quickguide *SIG Dome*

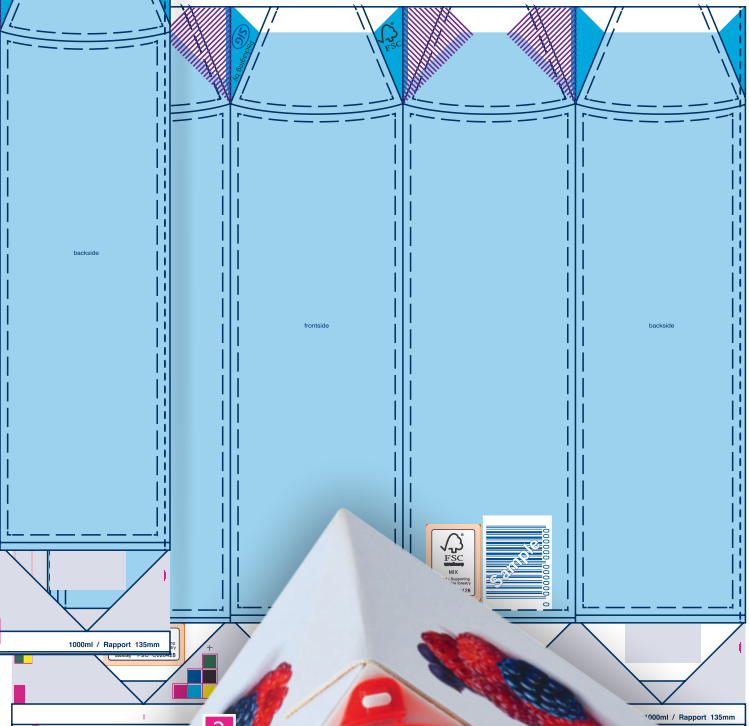
## The Carton Top Panel




The Quickguide *SIG Dome* describes the specific characteristics of the carton top panel design of this package. All information on repro- and print specifications can be found in the Artwork Manual for Rotogravure Printing.

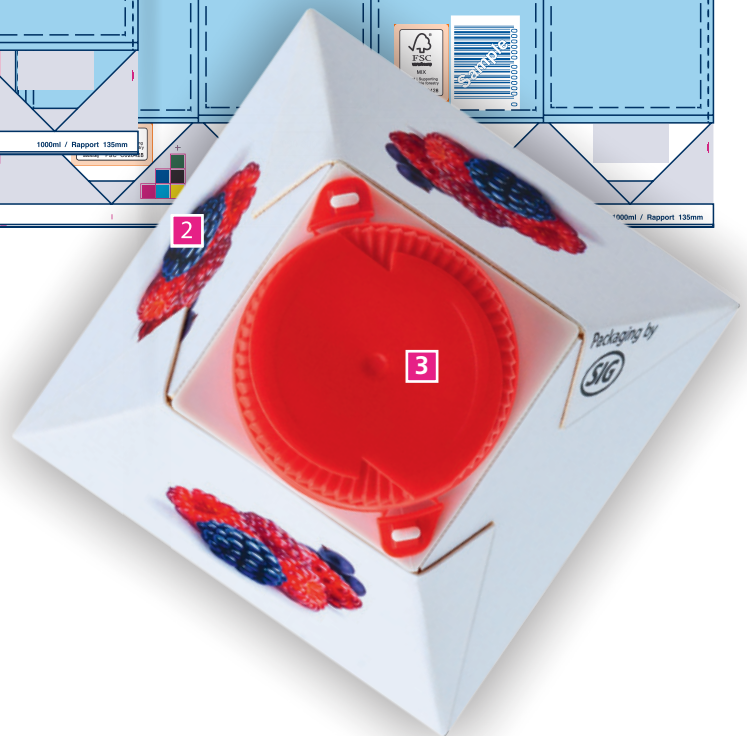
Keyline with 2.5mm print free top-area



Keyline with 10mm print free top-area



-  repeating
-  print covered after folding
-  print free covered after folding



- 1** On the carton top panel there are areas used for repeating images or graphic elements.
- 2** Repeating will be done by SIG during the repro phase. Photos as well as linework elements can be repeated.
- 3** The best-before date will be printed on the screw cap. There is no need to place a white area inside of the design therefore.

**When designing the top-flaps it must be considered, that the seamless and tolerance-free connection of the design cannot be assured when forming the top-flaps in the filling machine. Solid plains and vignetts can be used.**

**Texts placed on the carton top panel must not extend into the repeating-areas. Please keep text away from the repeating-areas with a distance of min. 3mm.**

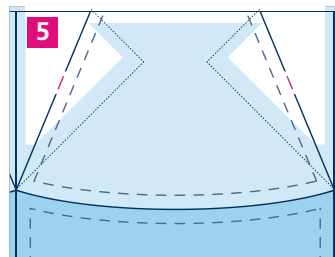
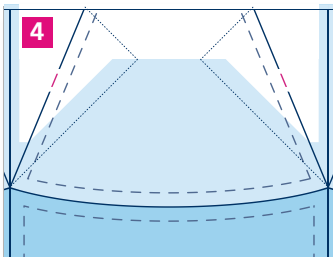


## Quickguide *combidome*

### The Carton Top Panel

During the filling process an activation-mark always occurs in the top-area which is visible on the outside PE-layer **1** and **2**.

This activation-mark is more striking on flat, plain backgrounds **1** and **2** than on structured designs **3**.



**4** To safely avoid activation-marks in the design a 10mm white print free area of 10mm must be in serted.

**5** From technical reasons a print free area of minimum 2.5mm must be used at the top edge of the packaging.

**6** Example showing the use of the 10mm print free top are in the design.

**7** Example showing an adaption of designing on the 2.5mm print free top area.

**The different areas are prepared on separate layers in the keylines for selection.**