



SIG Dome & SIG DomeMini

Quickguide for *SIG Dome & SIG DomeMini*

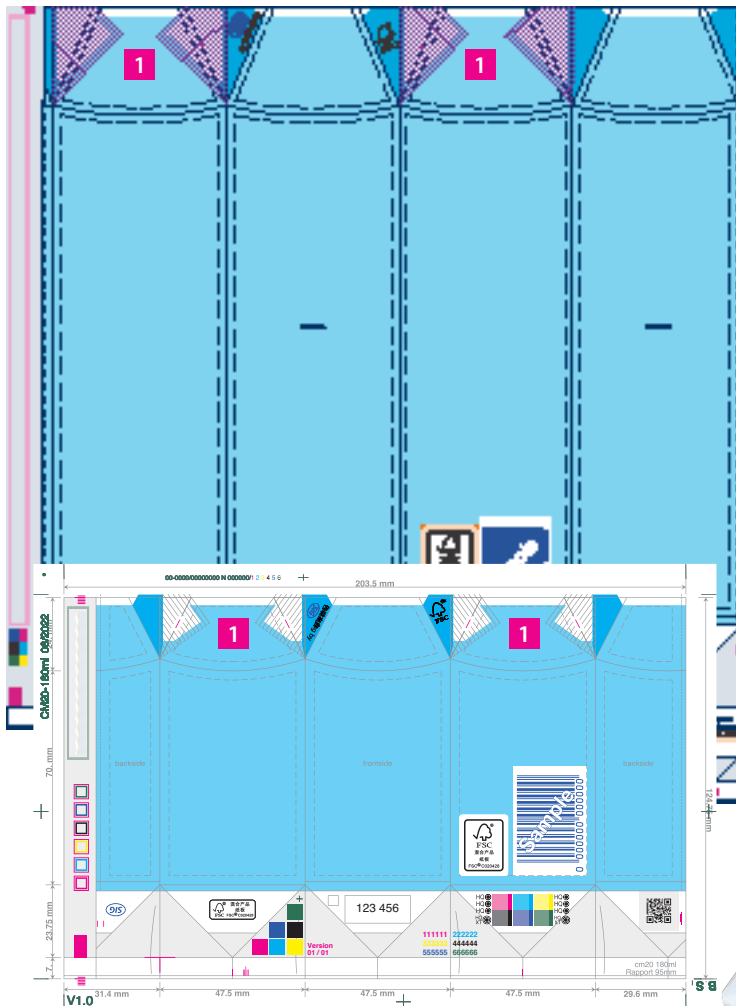
Status March 2026

Quickguide for SIG Dome & SIG DomeMini

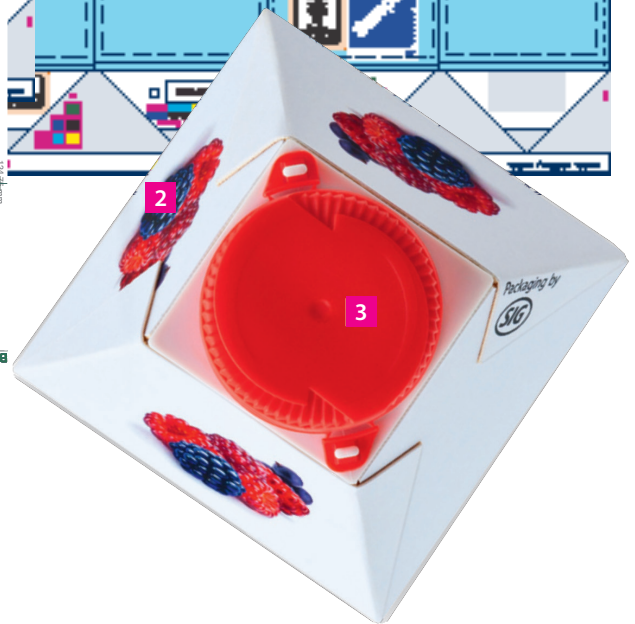
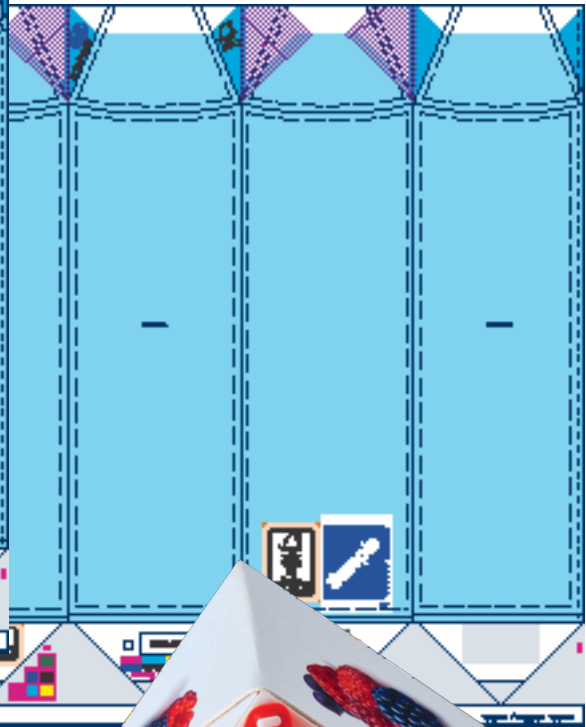
The Carton Top Panel



The Quickguide for SIG Dome & SIG DomeMini describes the specific characteristics of the carton top panel design of this package. All information on repro- and print specifications can be found in the Artwork Manual for Rotogravure Printing.

Keyline with 2.5mm print free top-area



Keyline with 10mm print free top-area



-  repeating
-  print covered after folding
-  print free covered after folding

- 1** On the carton top panel there are areas used for repeating images or graphic elements.
- 2** Repeating will be done by SIG during the repro phase. Photos as well as linework elements can be repeated.
- 3** The best-before date will be printed on the screw cap. There is no need to place a white area inside of the design therefore.

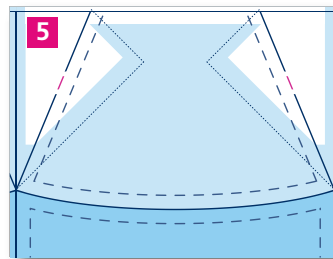
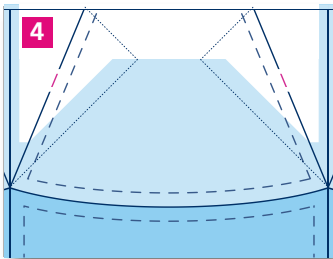
When designing the top-flaps it must be considered, that the seamless and tolerance-free connection of the design cannot be assured when forming the top-flaps in the filling machine. Solid plains and vignettes can be used.

Texts placed on the carton top panel must not extend into the repeating-areas. Please keep text away from the repeating-areas with a distance of min. 3mm.

Quickguide for SIG Dome & SIG DomeMini The Carton Top Panel

During the filling process an activation-mark always occurs in the top-area which is visible on the outside PE-layer **1** and **2**.

This activation-mark is more striking on flat, plain backgrounds structured designs **3**.



4 To safely avoid activation-marks in the design a 10mm white print free area must be inserted for SIG Dome.

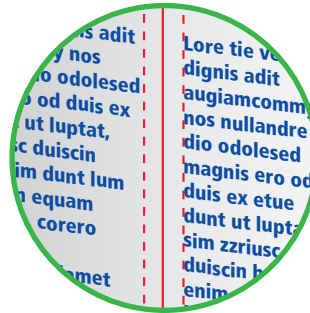
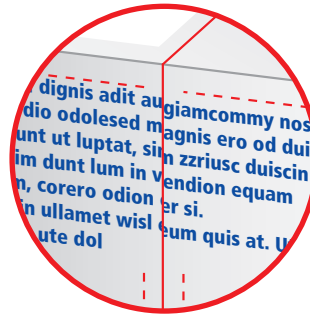
5 From technical reasons a print free area of minimum 2.5mm must be used at the top edge of the packaging. For SIG DomeMini only the print free area of 2.5 mm is available.

6 Example showing the use of the 10mm print free area in the design.

7 Example showing an adaption of designing on the 2.5mm print free top area.

The different areas are prepared on separate layers in the keylines for selection.

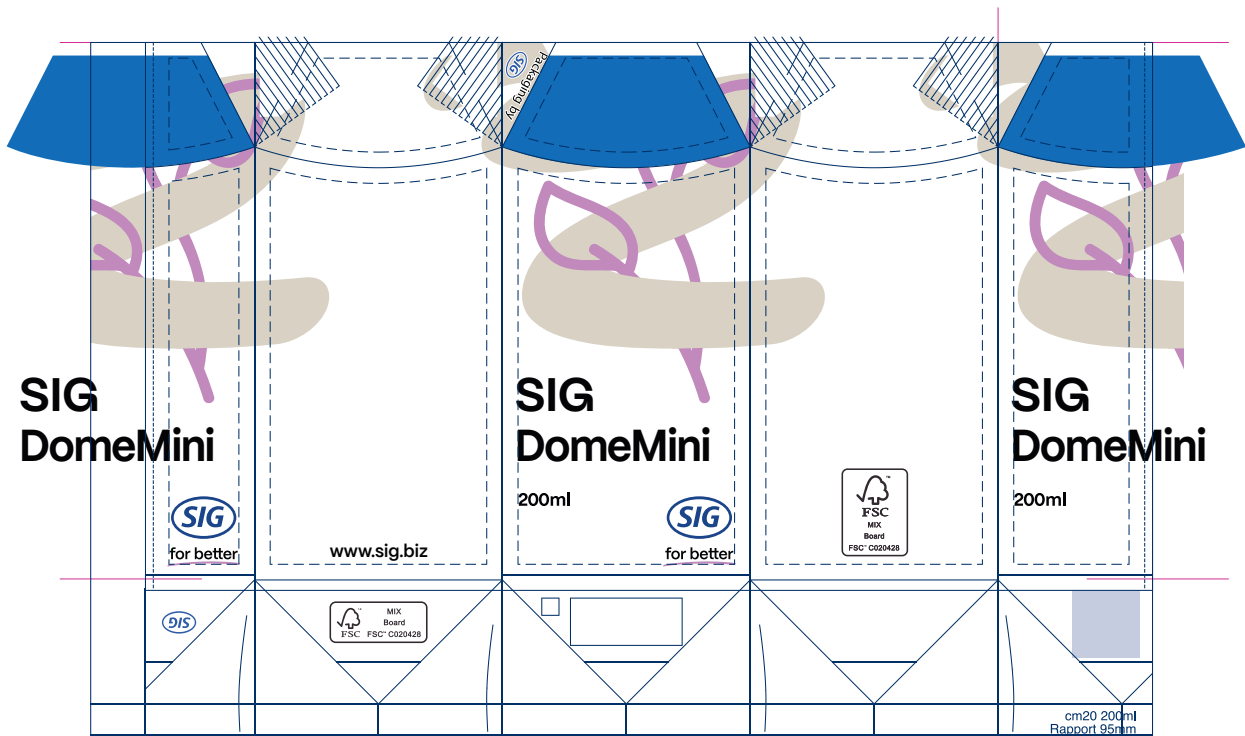
Quickguide for SIG Dome & SIG DomeMini
The Back Panel and Longitudinal Seam of SIG DomeMini



Types of cartons with a divided back panel

The back panel is not divided in the middle and the left-hand side is wider than the right-hand side. Please see the type area marking to prevent elements from being cut.

Visualisation of the flat datafiles



Quickguide for SIG Dome & SIG DomeMini

Misalignment along the Longitudinal Seam of SIG DomeMini

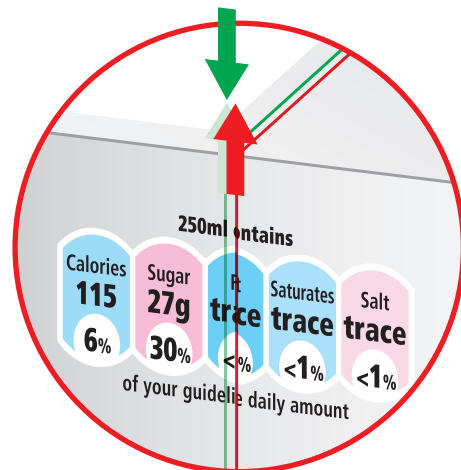
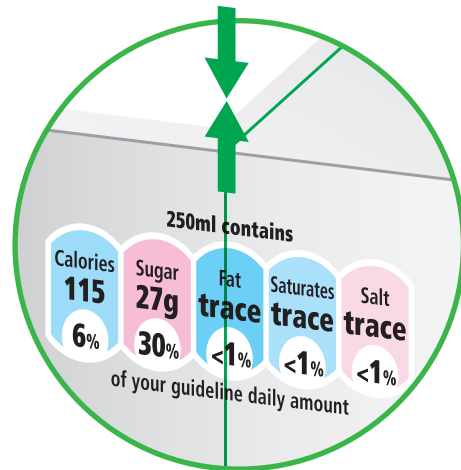
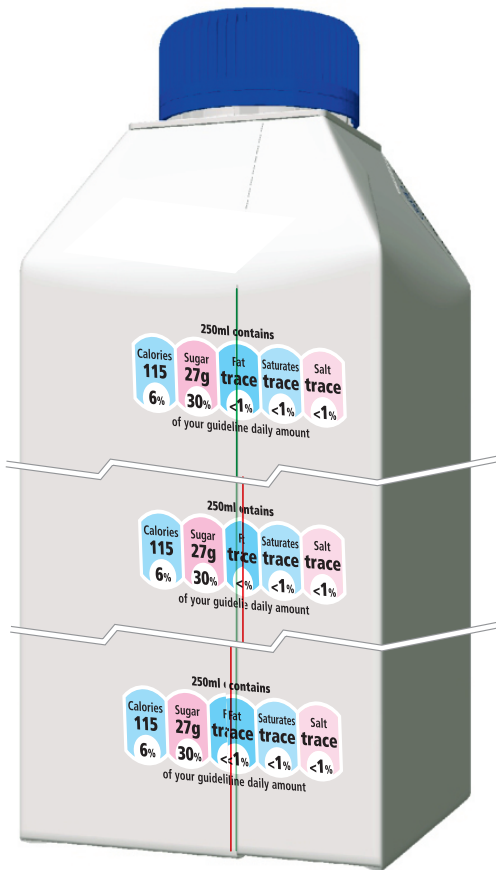
Misalignment along the longitudinal seam

Production tolerances in the dye-cutting and glueing machines cause deviation along the longitudinal seam. To ensure that text will neither be cut nor appear double the type area marking needs to be maintained.

If it is not possible to maintain the type area marking by reason of the design, deviations compared to the approved artwork will occur in the bulk production. The clearness of the deviation depends on the size and width of the text and the typefont used.

The illustrations on this page show possible production tolerances.

Please consider the tolerances specified in the table on page "Standard Values: Print - Reproduction - Carton blank".



Misalignment: ± 2.0 mm
(longitudinal seam horizontal match point
– package erected)

